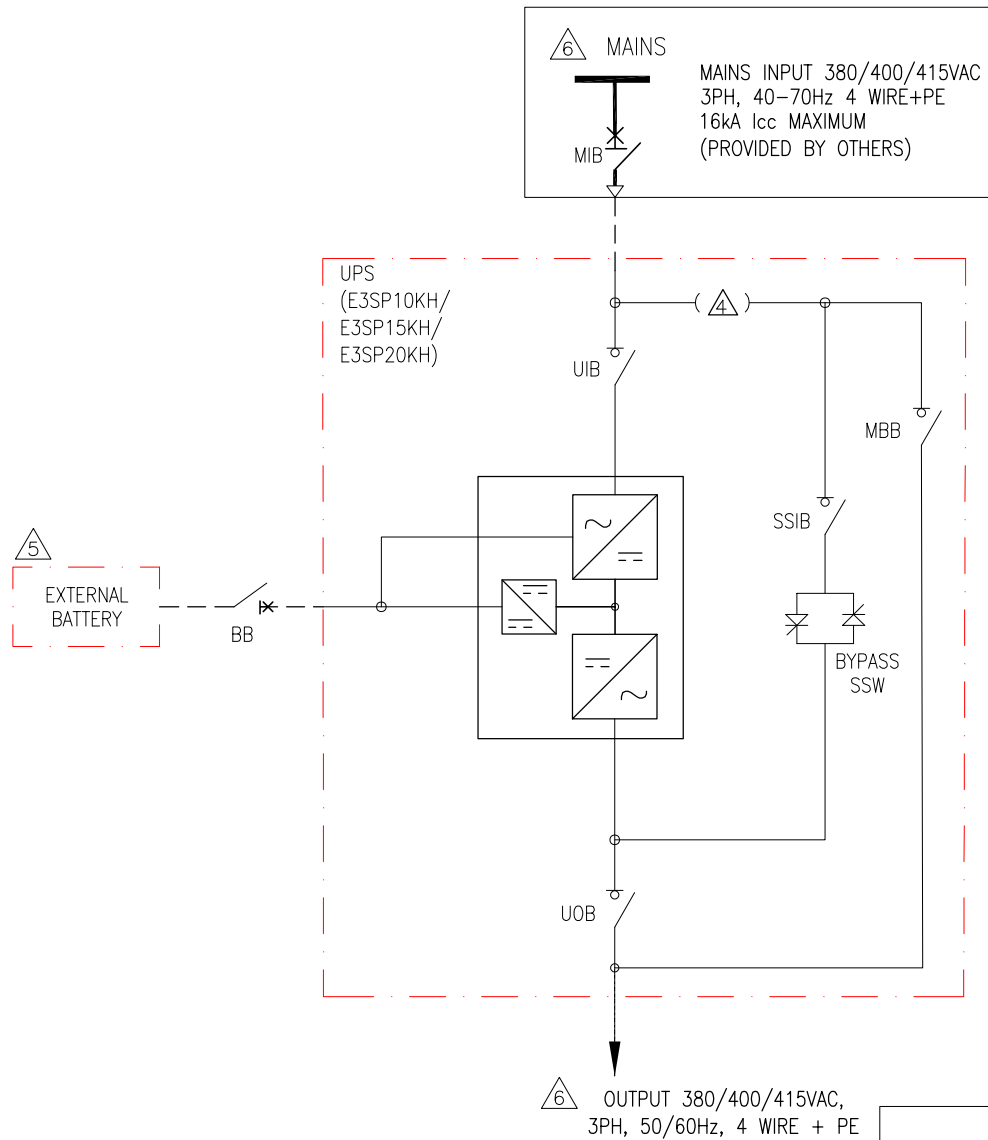
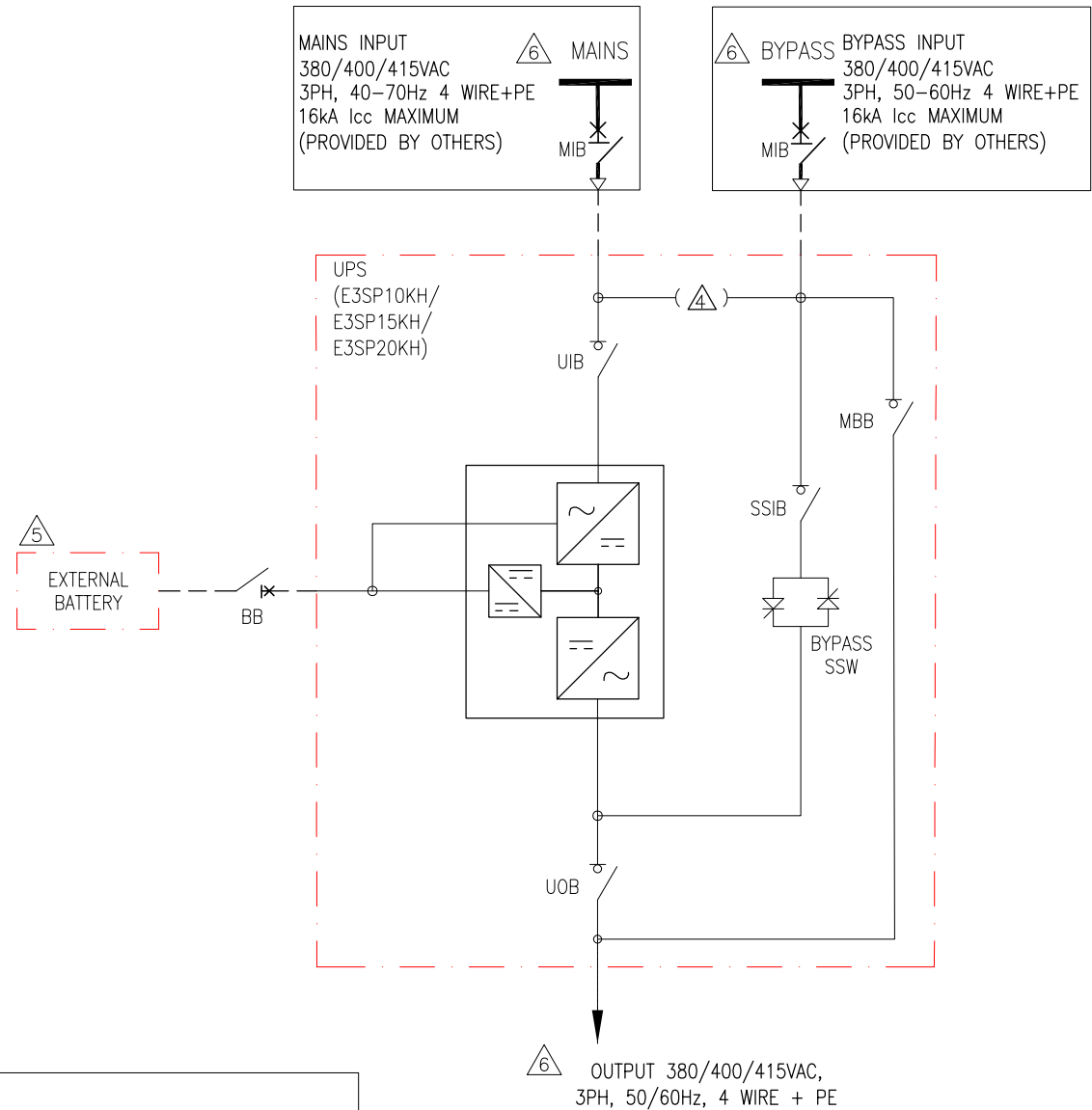


## SINGLE MAINS CONFIGURATION



## DUAL MAINS CONFIGURATION



NOTES:

1. INSTALLATION SHALL COMPLY WITH ALL APPLICABLE NATIONAL AND LOCAL ELECTRICAL REGULATIONS.
2. REFER TO PRODUCT DOCUMENTATION FOR ADDITIONAL DETAILS PRIOR TO INSTALLATION AND SITE PREPARATION WORK
3. DRAWING DEPICTS POWER SYSTEM CONNECTIONS AND IS NOT REPRESENTATIVE OF PHYSICAL LAYOUT.  
△ SINGLE MAINS CONFIGURATION IS DEFAULT.  
FOR DUAL MAINS CONFIGURATION REMOVE THE 3 SHORTING JUMPERS.
- △ BATTERIES CAN BE CONNECTED IN SERIES DEPENDING UPON THE RUNTIME REQUIREMENTS.
- △ REFER TO SHEET-4 FOR ELECTRICAL DATA.
7. UP TO 4 UPS CAN BE CONNECTED IN PARALLEL.
8. CABLE LUGS ARE PROVIDED BY OTHERS. OPTIONAL KIT E3SPOPT002 CAN BE ORDERED FOR 10-20KVA CABLE LUGS.

LEGEND:

----- CABLE PROVIDED BY OTHERS

THIS DRAWING AND SPECIFICATIONS HEREIN ARE THE PROPERTY OF SCHNEIDER ELECTRIC AND SHALL NOT BE COPIED, REPRODUCED OR USED IN WHOLE OR IN PART, AS THE BASIS FOR THE MANUFACTURE OR SALE OF ITEMS WITHOUT WRITTEN PERMISSION FROM SCHNEIDER ELECTRIC. THIS DRAWING IS BASED UPON LATEST AVAILABLE INFORMATION AND IS SUBJECT TO CHANGE WITHOUT NOTICE.

**Schneider Electric**

TITLE:	
--------	--

EASY UPS 3S PRO  
10 - 20kVA, 400V, 3PH  
WITHOUT BATTERY MODULES  
SYSTEM ONELINE DIAGRAM-1 UPS

PROJECT: SUBMITTAL DRAWINGS SHEET 1 OF 4

DWG NO:	
---------	--

0: E3SP10K20H-SD

DRAWN:	TRASSIA	25-FEB-25
--------	---------	-----------

ENGINEER:	YAPING YANG	28-FEB-25
-----------	-------------	-----------

4	APPROVED:	PETER WANG	28-FEB-25
---	-----------	------------	-----------

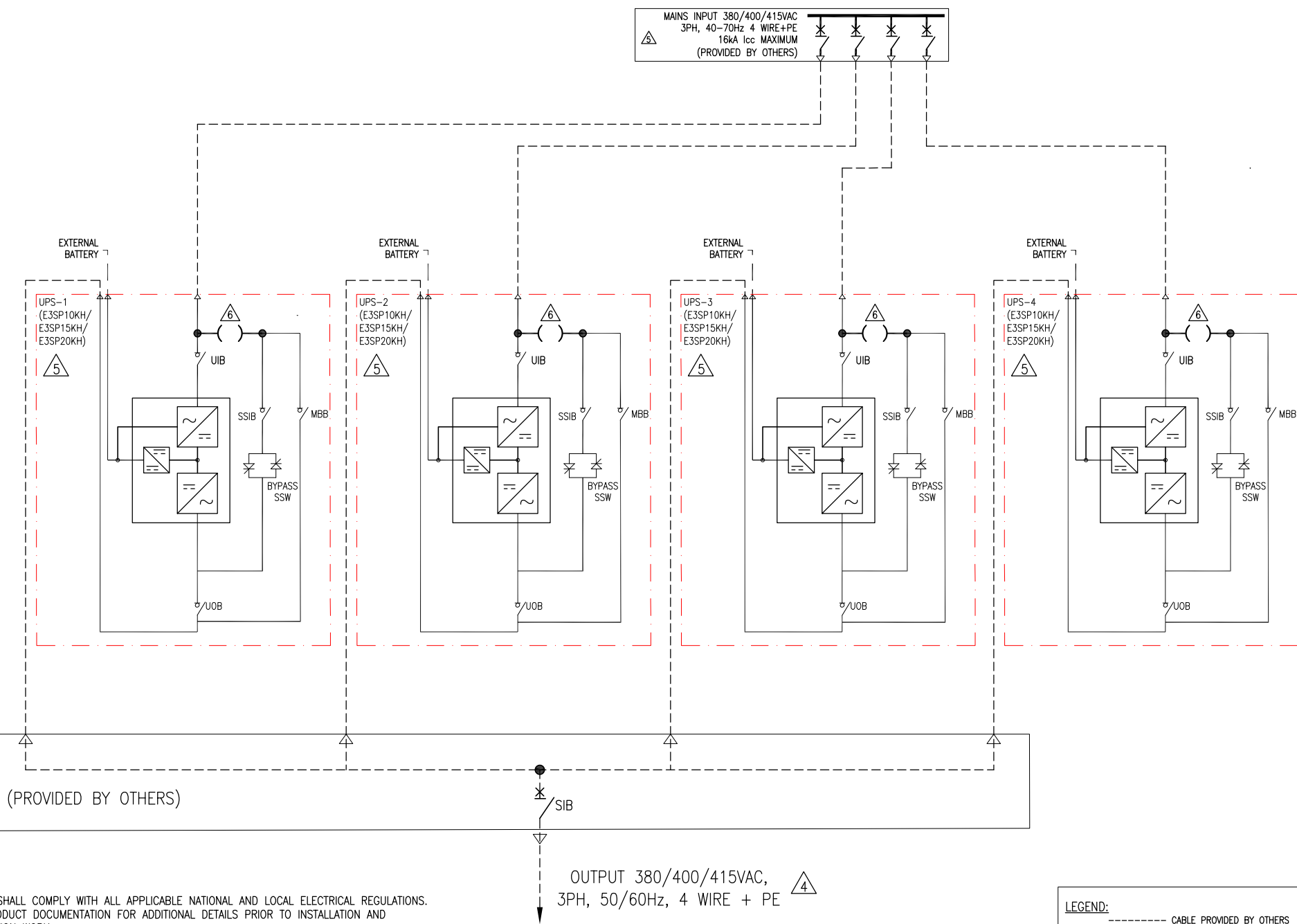
REV. 0

FIRST

## ANGLE

## PROJECTION

4 UPS IN PARALLEL – SINGLE MAINS



NOTES:

1. INSTALLATION SHALL COMPLY WITH ALL APPLICABLE NATIONAL AND LOCAL ELECTRICAL REGULATIONS.
2. REFER TO PRODUCT DOCUMENTATION FOR ADDITIONAL DETAILS PRIOR TO INSTALLATION AND SITE PREPARATION WORK
3. DRAWING DEPICTS POWER SYSTEM CONNECTIONS AND IS NOT REPRESENTATIVE OF PHYSICAL LAYOUT.
4. THE NUMBER OF OUTPUT WIRES MUST MATCH THE NUMBER OF INPUT WIRES IN SINGLE MAINS OR BYPASS WIRES FOR DUAL MAINS.
5. REFER TO SHEET-4 FOR ELECTRICAL DATA.
6. SINGLE MAINS CONFIGURATION IS DEFAULT. FOR DUAL MAINS CONFIGURATION REMOVE THE 3 SHORTING JUMPERS.
7. UP TO 4 UPS CAN BE CONNECTED IN PARALLEL.
8. CABLE LUGS ARE PROVIDED BY OTHERS. OPTIONAL KIT E3SPOPT002 CAN BE ORDERED FOR 10-20KVA CABLE LUGS.

OUTPUT 380/400/415VAC, 3PH, 50/60Hz, 4 WIRE + PE

LEGEND: ----- CABLE PROVIDED BY OTHERS

THIS DRAWING AND SPECIFICATIONS HEREIN ARE THE PROPERTY OF SCHNEIDER ELECTRIC AND SHALL NOT BE COPIED, REPRODUCED OR USED IN WHOLE OR IN PART, AS THE BASIS FOR THE MANUFACTURE OR SALE OF ITEMS WITHOUT WRITTEN PERMISSION FROM SCHNEIDER ELECTRIC. THIS DRAWING IS BASED UPON LATEST AVAILABLE INFORMATION AND IS SUBJECT TO CHANGE WITHOUT NOTICE.

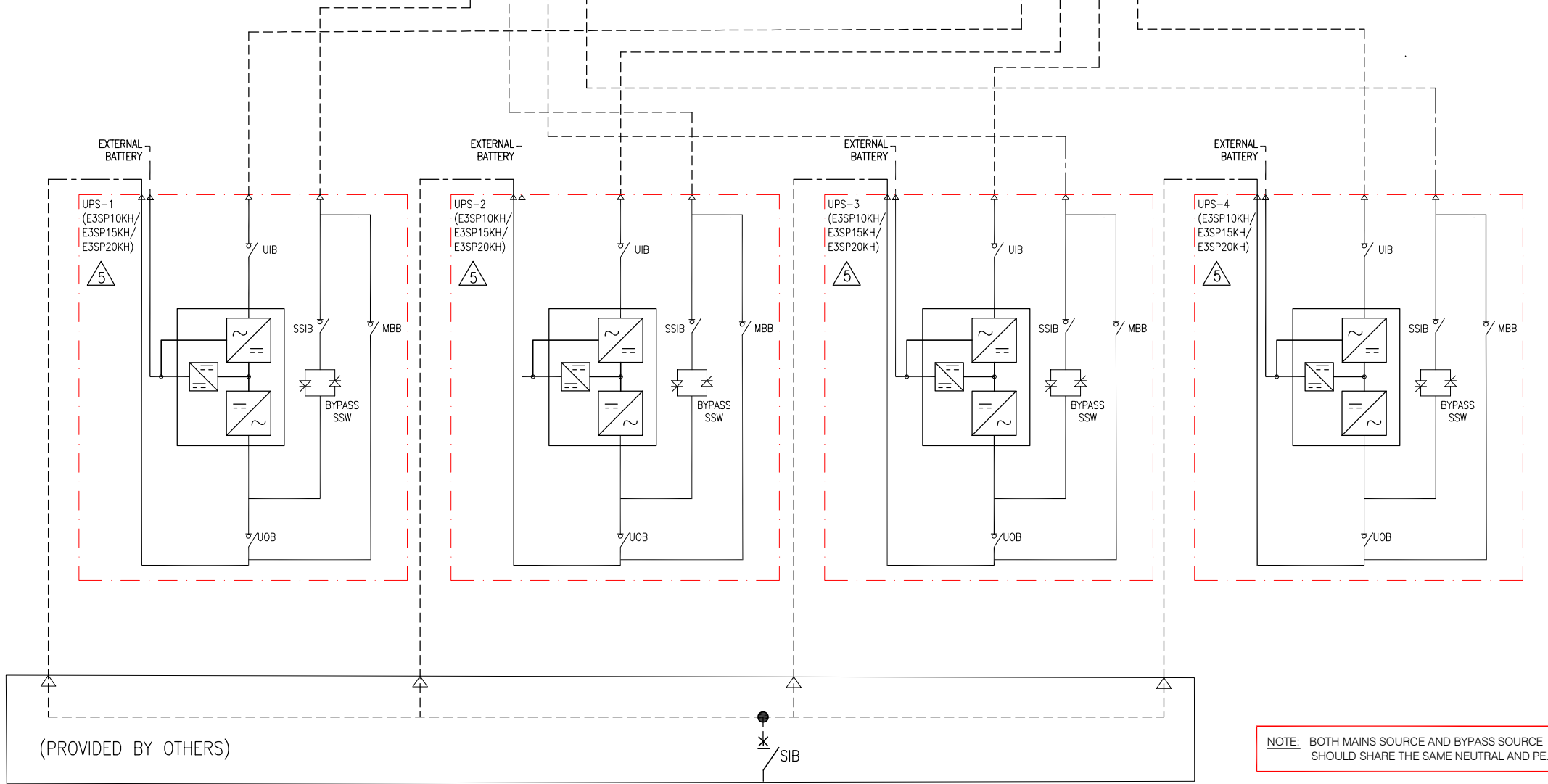
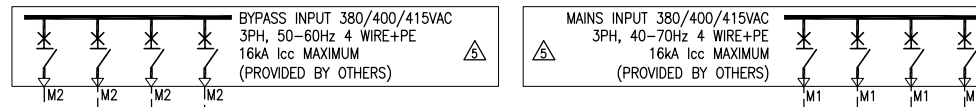
Schneider Electric

TITLE: EASY UPS 3S PRO 10 - 20KVA, 400V, 3PH WITHOUT BATTERY MODULES SYSTEM ONELINE DIAGRAM-4 UPS SINGLE MAINS PROJECT: SUBMITTAL DRAWINGS SHEET 2 OF 4

DWG NO: E3SP10K20H-SD  
DRAWN: TRASSIA  
ENGINEER: YAPING YANG  
APPROVED: PETER WANG

REV: 0  
FIRST ANGLE PROJECTION

# 4 UPS IN PARALLEL – DUAL MAINS



**NOTE:** BOTH MAINS SOURCE AND BYPASS SOURCE SHOULD SHARE THE SAME NEUTRAL AND PE.

**LEGEND:** ----- CABLE PROVIDED BY OTHERS

- NOTES:**
1. INSTALLATION SHALL COMPLY WITH ALL APPLICABLE NATIONAL AND LOCAL ELECTRICAL REGULATIONS.
  2. REFER TO PRODUCT DOCUMENTATION FOR ADDITIONAL DETAILS PRIOR TO INSTALLATION AND SITE PREPARATION WORK
  3. DRAWING DEPICTS POWER SYSTEM CONNECTIONS AND IS NOT REPRESENTATIVE OF PHYSICAL LAYOUT.
  4. THE NUMBER OF OUTPUT WIRES MUST MATCH THE NUMBER OF INPUT WIRES IN SINGLE MAINS OR BYPASS WIRES FOR DUAL MAINS.
  5. REFER TO SHEET-4 FOR ELECTRICAL DATA.
  6. UP TO 4 UPS CAN BE CONNECTED IN PARALLEL.
  7. CABLE LUGS ARE PROVIDED BY OTHERS. OPTIONAL KIT E3SPOPT002 CAN BE ORDERED FOR 10-20KVA CABLE LUGS.

THIS DRAWING AND SPECIFICATIONS HEREIN ARE THE PROPERTY OF SCHNEIDER ELECTRIC AND SHALL NOT BE COPIED, REPRODUCED OR USED IN WHOLE OR IN PART, AS THE BASIS FOR THE MANUFACTURE OR SALE OF ITEMS WITHOUT WRITTEN PERMISSION FROM SCHNEIDER ELECTRIC. THIS DRAWING IS BASED UPON LATEST AVAILABLE INFORMATION AND IS SUBJECT TO CHANGE WITHOUT NOTICE.



**TITLE:**  
EASY UPS 3S PRO  
10 - 20KVA, 400V, 3PH  
WITHOUT BATTERY MODULES  
SYSTEM ONLINE DIAGRAM-4 UPS DUAL MAINS

**PROJECT:** SUBMITTAL DRAWINGS

**SHEET 3 OF 4**

**DWG NO:** E3SP10K20H-SD

**REV:** 0

**DRAWN:** TRASSIA 25-FEB-25

**ENGINEER:** YAPING YANG 28-FEB-25

**APPROVED:** PETER WANG 28-FEB-25

**FIRST ANGLE PROJECTION**

ELECTRICAL DATA SHEET			
UPS RATING	10kVA	15kVA	20kVA
INPUT SPECIFICATIONS			
INPUT VOLTAGE	380V/400V/415V	380V/400V/415V	380V/400V/415V
NOMINAL INPUT CURRENT (A)	16/16/15	24/23/22	32/31/29
MAXIMUM INPUT CURRENT (A)	21/20/19	31/29/28	41/39/38
INPUT CURRENT LIMITATION (A)	21/20/19	31/29/28	41/39/38
INPUT FREQUENCY	40-70Hz		
INPUT WIRING	3P+N+PE		
INPUT THDI	< 3%@ Full linear load, < 4%@ Full non-linear load		
BYPASS SPECIFICATIONS			
BYPASS VOLTAGE	380V/400V/415V	380V/400V/415V	380V/400V/415V
MINIMUM BYPASS VOLTAGE	342/360/373	342/360/373	342/360/373
MAXMUM BYPASS VOLTAGE	418/440/457	418/440/457	418/440/457
NOMINAL BYPASS CURRENT (A)	16/15/15	24/22/22	31/30/29
BYPASS FREQUENCY	50/60Hz		
BYPASS WIRING	3P+N+PE		
OUTPUT SPECIFICATIONS			
OUTPUT VOLTAGE	380V/400V/415V	380V/400V/415V	380V/400V/415V
NOMINAL OUTPUT CURRENT (A)	16/15/14	23/22/21	31/29/28
OUTPUT FREQUENCY	50/60Hz		
OUTPUT WIRING	3P+N+PE		
OUTPUT THDU	<1% for 100% balanced linear load, < 5% for non-linear load		
BATTERY SPECIFICATIONS			
CHARGING POWER	Programmable from 1% to 20% of UPS capacity. Default is 10%.		
MAXIMUM CHARGING POWER (W)	2000	3000	4000
NOMINAL BATTERY VOLTAGE (VDC)	384 to 480		
NOMINAL FLOAT VOLTAGE (VDC)	436 to 545		
END OF DISCHARGE VOLTAGE (FULL LOAD) (VDC)	308 to 384		
END OF DISCHARGE VOLTAGE (NO LOAD) (VDC)	336 to 420		
BATTERY CURRENT AT FULL LOAD AND NOMINAL BATTERY VOLTAGE (A)	27-22	41-33	55-44
BATTERY CURRENT AT FULL LOAD AND MINIMUM BATTERY VOLTAGE (A)	34-27	51-41	68-55
RIPPLE CURRENT	<5% C10		
MAXIMUM SHORT CIRCUIT WITHSTAND	Icc=16kA		
RECOMMENDED CABLE SIZES			
INPUT CABLE SIZE (mm2)	6	6	10
BYPASS CABLE SIZE (mm2)	6	6	10
OUTPUT CABLE SIZE (mm2)	6	6	10
BATTERY INPUT CABLE SIZE (mm2)	6	6	16
PE CABLE SIZE (mm2)	6	6	16

- NOTES:
- 1. INSTALLATION SHALL COMPLY WITH ALL APPLICABLE NATIONAL AND LOCAL ELECTRICAL REGULATIONS.
  - 2.REFER TO PRODUCT DOCUMENTATION FOR ADDITIONAL DETAILS PRIOR TO INSTALLATION AND SITE PREPARATION WORK.

THIS DRAWING AND SPECIFICATIONS HEREIN ARE THE PROPERTY OF SCHNEIDER ELECTRIC AND SHALL NOT BE COPIED, REPRODUCED OR USED IN WHOLE OR IN PART, AS THE BASIS FOR THE MANUFACTURE OR SALE OF ITEMS WITHOUT WRITTEN PERMISSION FROM SCHNEIDER ELECTRIC. THIS DRAWING IS BASED UPON LATEST AVAILABLE INFORMATION AND IS SUBJECT TO CHANGE WITHOUT NOTICE.



TITLE:  
EASY UPS 3S PRO  
10 – 20kVA, 400V, 3PH  
WITHOUT BATTERY MODULES  
ELECTRICAL DATA SHEET  
PROJECT: SUBMITTAL DRAWINGS | SHEET 4 OF 4

DWG NO:	E3SP10K20H–SD		REV:	0
DRAWN:	TRASSIA	25–FEB–25	FIRST ANGLE PROJECTION	
ENGINEER:	YAPING YANG	28–FEB–25		
APPROVED:	PETER WANG	28–FEB–25		